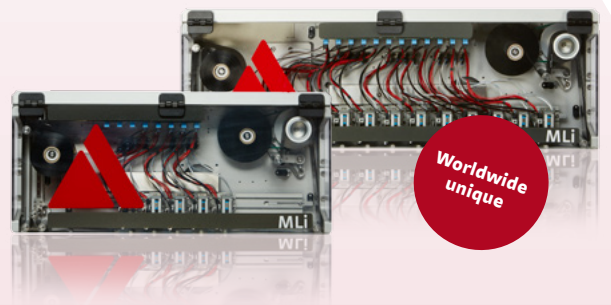
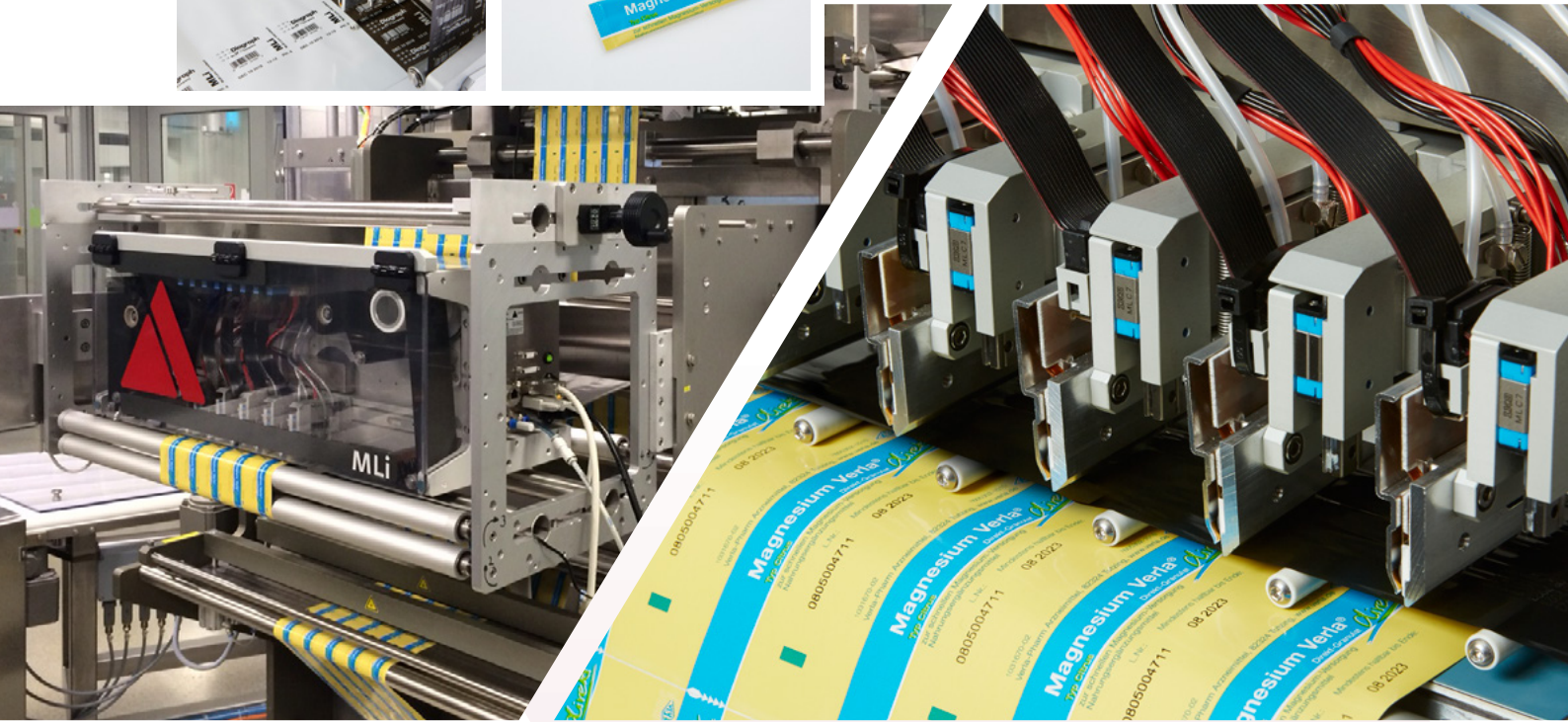
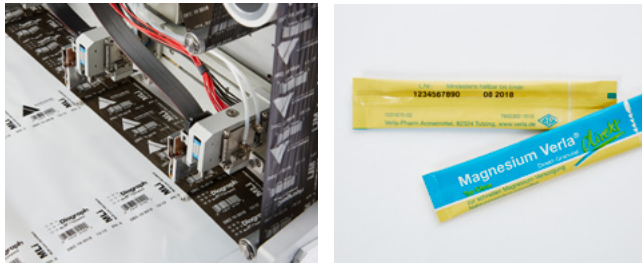


we mark your products.

MLi Series

Multi Lane Intermittent Printer



Unique-in-the-industry multi-head thermal transfer printer

- ideal for manufacturers looking for print on several lanes of indexing web material

Outstanding performance in print speed

- Up to 840 high quality prints per minute

Less downtime

- One ribbon for up to 12 print heads

Flexible

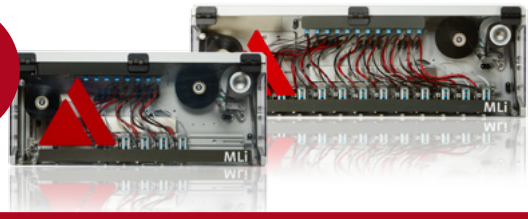
- Centralised message creation for individual and batch messages across all print heads



ALLEN CODING
A DIVISION OF ITW

MLi Series

Available in three sizes



Printer	MLi 620	MLi 820	MLi 1020
Max. stroke area per printhead	56 x 40 mm or 56 x 90 mm		
Max. print area (Width)	425 mm	625 mm	825 mm
Print speed Intermittent	50 – 70 mm/s		
Performance at 5 mm print height (Prints per Minute)	560	840	840
Resolution	300 dpi		
Max. number of True Edge printheads	8	12	12
Resistance individually adjustable	✓	✓	✓
Min. thermal printhead spacing	46 mm		
Dimensions (H x D x W)	275 x 273 x 620 mm	275 x 273 x 820 mm	275 x 273 x 1020 mm
Max. Weight	43 kg	45 kg	47 kg
Max. ribbon length at 4,5 microns	600 m		
Ribbon width	60 mm		
Ribbon type externally coated	✓	✓	✓
Air pressure 1 – 8 bar	✓	✓	✓
Electrical 100 - 240VAC, 50 - 60 Hz, max. 20A (100VAC), ESD protected	✓	✓	✓
Environmental conditions 5° – 40 °C, humidity 40 - 90 % non-condensing	✓	✓	✓
IP rate	IP 20		
Control via a:touch2 or PC	✓	✓	✓
Interface Ethernet / Serial	✓	✓	✓

Features / Print formats

Automatic functions	Real time, various date formats, counter, variable field
Fonts	Resident font Arial, all true type fonts

Host line connections

General error	✓	✓	✓
Inhibit	✓	✓	✓
Print on Cycle	✓	✓	✓
Ribbon out	✓	✓	✓
Alarm beacon	✓	✓	✓

Films and Frames

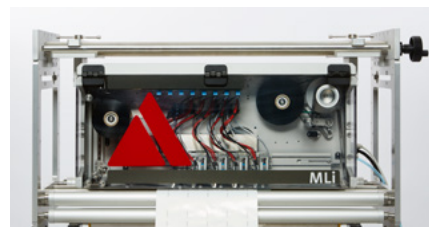
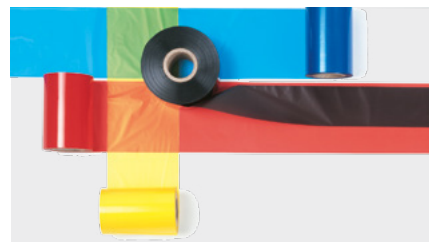
Films

Allen Coding thermal transfer ribbons have been specifically developed for thermal transfer printers and produce highest quality images, even in high-speed printing. Different combinations of waxes and resins, the composition of which is coordinated with the respective material to be printed on, are used to produce print images with a high scratch-resilience and durability in every application. With our large range, Allen Coding is also able to deliver special colours. Our expert team should be able to find the perfect solution for your specific application. Extensive experience in the coding industry, as well as close cooperation

with our ITW sister companies, enables us to offer you many different products and services from a single source.

Custom Frame Design

If we do not already have a frame assembly suited to meet your specific application requirements from our extensive installation portfolio, we are able to offer a custom design and manufacturing service using the latest in 3D modelling software.



Features

The MLI-TE is a multiple head thermal transfer print system ideal for manufacturers looking for high resolution and high throughput print on several lanes of indexing web material.

Outstanding performance in print speed and quality

- Prints up to 840 messages per minute by utilising up to 12 thermal printheads and a high speed shuttling carriage
- Prints high quality barcodes, text and graphics on porous and non-porous surfaces

Less downtime and mainanance

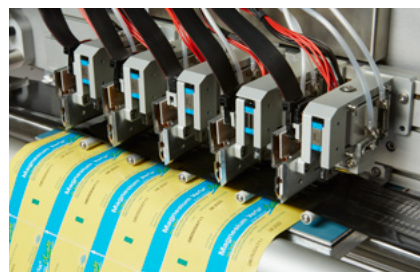
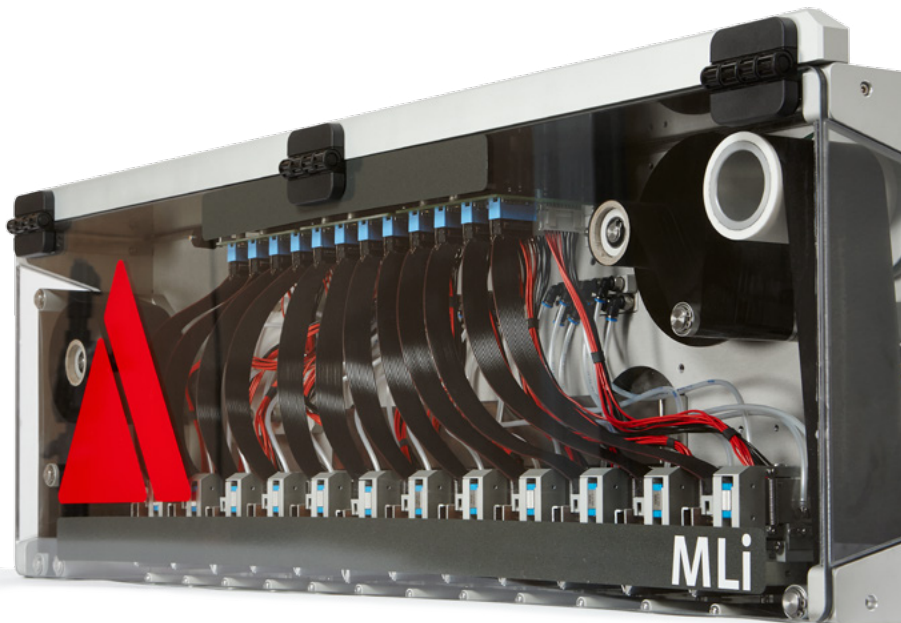
- Clean and efficient single consumable for the entire system reduces downtime and maintenance
- Easy front panel access

Flexible and easy to integrate

- Simple, centralised message creation for individual and batch messages across all lanes of print
- Multiple standard configurations allow you to scale the system to the unique application requirements
- Single modular streamlined design with minimal cabling allows for easy integration with other machines

Applications

- Food and beverage (spices, sugar, coffee, ketchup, candy bars)
- Pharmaceutical (blister packages)
- Medical (syringes, sutures, IV bags, catheters)



Control Units



Control Unit	a:touch 2
Touch screen size	10,1 Inch
Resolution	1024 x 600 pixel
Dimensions (W x H x D)	331 x 196 x 42 mm
Weight (kg)	2,4
Ethernet	1 x 10/100/1000 Mbit
USB2.0 type A	1
RS232	2
Electrical connection	110V – 240V, 50/60 Hz, 12 V (DC)
Consumption	max. 1.5A
IP Rate	IP 20
Operating environment	5-40°, humidity 5 – 90 % non-condensing

Control- and design-software

Allen Coding offers software solutions for printer control and print image design appropriate for most coding applications. If you need customized software solutions, please contact us.

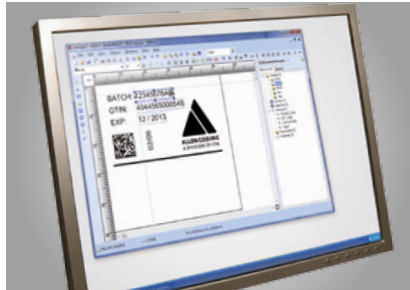
Control-software a:control

a:control is our printer operation platform software developed by Allen Coding. With a:control you are able to supervise your user and permission management, save your data and configure up to 10 printers in your network.



Design-software

Our label design software poses no limitations related to product marking and network requirements.



a:design2

a:design2 is state-of-the-art software for print image design by Allen Coding. It's simple and intuitive interface allows quick and highly professional design of print images.

Even complex print images can be designed and transferred to the printer with ease. Multiple printers can be set up in a network environment very quickly due to the well-structured configuration tools implemented in a:design2.



Deutschland
 Allen Coding GmbH
 Friedrich-Bergius-Ring 30
 D-97076 Würzburg
 Tel.: +49 (0) 931 25076-0

United Kingdom
 ITW
 Unit 9, Gateway 1000,
 Whittle Way, Arlington, Business Park,
 Stevenage, Hertfordshire SG1 2FP
 Tel.: +44 (0) 1438 347 770

www.AllenCoding.com

