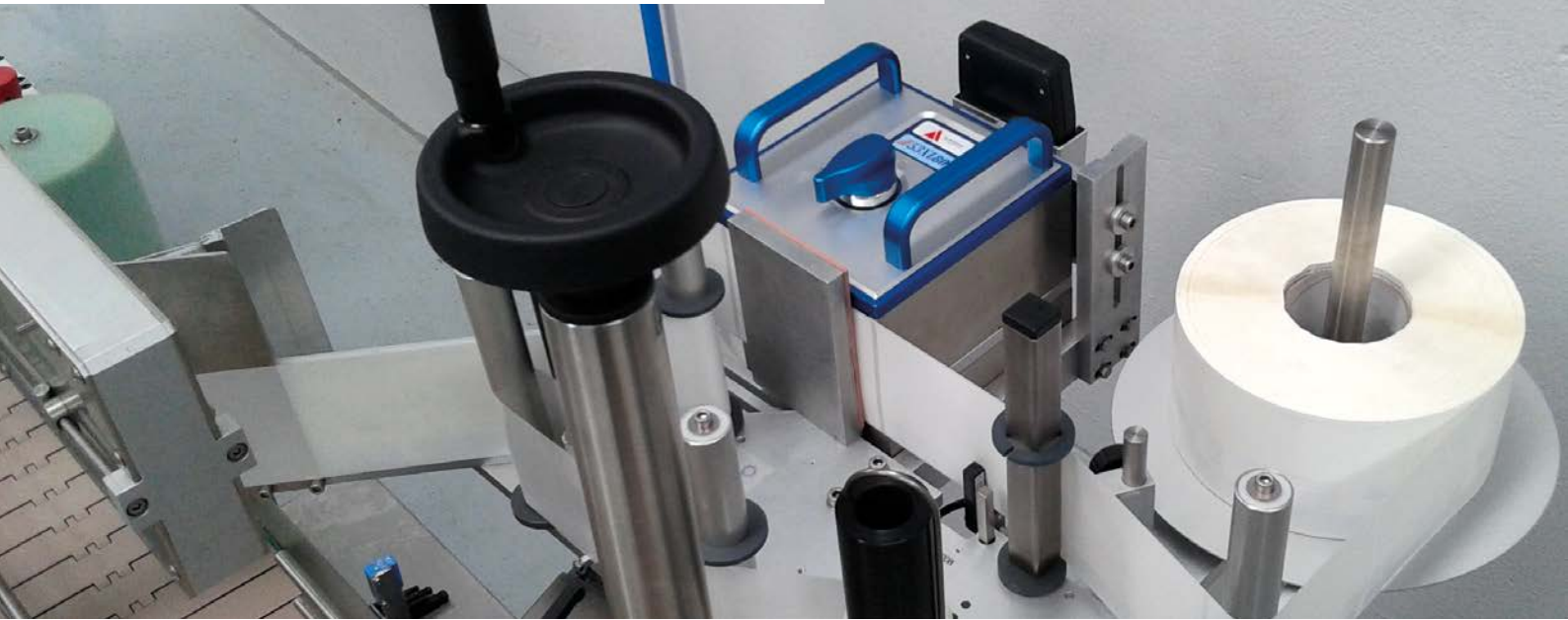


**we mark your products.**

# XL Series

Thermal transfer printing



## Cost-Effective

- Up to 40% less expensive than traditional thermal printer technologies without compromising print or system quality
- High-quality printing of barcodes, text and graphics at high-speeds of 450 prints per minute at 5mm print height
- Dual interior processors (one for printing and one for external communications) ensure high-speed performance despite the complexities of real time variable printing in many languages.
- Highly durable - elegantly simple and strong industrial design
- Minimal downtime - 600 meters of ribbon capacity

## True Unicode & Multi-Language User-Interface

- True Unicode printing enables real-time and dynamic date coding, offset calculation, counter, formula and variable field printing in over 125 languages.
- Multi-Language User Interface: available with the iView user interface can be configured in ten standard different languages.



*Ideal for  
emerging markets  
/ entry-level  
variable print*



**ALLEN CODING**  
A DIVISION OF ITW



Printer	25XLi	53XL40
Print area (H × W) intermitted <sup>1</sup>	max. 32 × 40 mm	max. 53 × 40 mm
Print speed intermitted	min. 75 mm/sec, max. 400 mm/sec	min. 75 mm/sec, max. 400 mm/sec
Performance at 5 mm print height (Prints per Min)	450	450
Druckfläche (H × B) kontinuierlich <sup>1</sup>		
Druckgeschwindigkeit kontinuierlich		
Print resolution 12 dots/mm (300 dpi <sup>2</sup> )	✓	✓
Dimensions printer (H × W × D)	205 × 160 × 190 mm	205 × 160 × 246 mm
Weight (kg)	5	7
Max. 600 m ribbon length at 4,5 micron	✓	✓
Air pressure 5 bar	✓	✓
Environment 5 – 40 °C, humidity 20 – 75 % non condensing	✓	✓
IP Rate	IP 20	IP 20
Inverted version available		
a:touch compatible	✓	✓
iView compatible	✓	✓
PR-5 compatible	✓	✓

### Features / Print format

Automatic functions	real time, various date formats (with offset), counter, variable field, formula
Fonts	3 internal fonts (New Gothic Bold compatibility font, swiss 721 bold, Swiss 721 roman) mirror print,
Internal Barcodes	2/5 Interleaved, Code 39, UPC, EAN8, EAN13, Code 93, DUN14, Code128, EAN128, Databar,

### Host line connections

General error	✓	✓
Inhibit	✓	✓
Print on Cycle	✓	✓

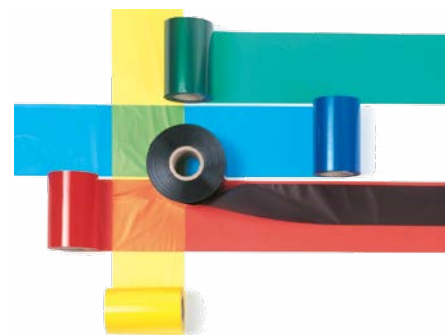
<sup>1</sup> Tolerances apply | <sup>2</sup> approximately

## Films and Frames

### Films

Allen Coding thermal transfer ribbons have been specifically developed for thermal transfer printers and produce highest quality images, even in high-speed printing. Different combinations of waxes and resins, the composition of which is coordinated with the respective material to be printed on, are used to produce print images with a high scratch-resilience and durability in every application. With our large range, Allen

Coding is also able to deliver special colours. Our expert team should be able to find the perfect solution for your specific application. Extensive experience in the coding industry, as well as close cooperation with our ITW sister companies, enables us to offer you many different products and services from a single source.





53XLc	53XL80U
	max. 53 x 80 mm
	min. 75 mm/sec, max. 400 mm/sec
250	450
max. 53 x 300 mm	
min. 75 mm/sec, max. 400 mm/sec	
✓	✓
205 x 160 x 246 mm	205 x 190 x 246 mm
7	8
✓	✓
✓	✓
✓	✓
IP 20	IP 20
✓	
✓	✓
✓	✓
✓	✓

up to 12 fonts expandable by the customer

Databar Truncated/ Limited/ Stacked/ Omnidirectional, Datamatrix, GS1- Datamatrix, QR Code

✓	✓
✓	✓
✓	✓



### Custom Frame Design

If we do not already have a frame assembly suited to meet your specific application requirements from our extensive installation portfolio, we are able to offer a custom design and manufacturing service using the latest in 3D modeling software.



## Control Units



Control Unit	PR-5	iView	a:touch 2
Touch screen size	3 inch	7 inch	10,1 Inch
Resolution	128 x 64 pixel	800 x 480 pixel	1024 x 600 pixel
Dimensions (W x H x D)	100 x 160 x 30 mm	240 x 135 x 40 mm	331 x 196 x 42 mm
Weight (kg)	0,25	0,7	2,4
Ethernet	N/A	1 x 10/100 Mbit	1 x 10/100/1000 Mbit
USB2.0 Typ A	1	1	1
RS232	N/A	2	2
Electrical connection	5 V (DC)	5 V (DC)	110V–240V, 50/60 Hz, 12 V (DC)
Consumption	max. 0,4A	max. 2A	max. 1.5A
IP Rate	IP 20	IP 30	IP 20
Operating environment	5–40 °C, humidity 20–75 % non condensing	–30–80 °C, humidity 10–90 % non condensing	5–40 °C, humidity 5–90 % non condensing

## Control- and design-software

Allen Coding offers software solutions for printer control and print image design appropriate for most coding applications. If you need customized software solutions, please contact us.

### Control-software

**a:control**  
a:control is our printer operation platform software developed by Allen Coding. With a:control you are able to supervise your user and permission management, save your data and configure up to 10 printers in your network.

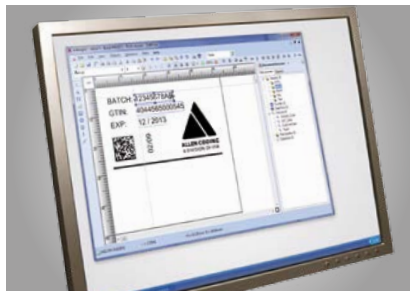


### Design-software

Our label design software poses no limitations related to product marking and network requirements.

### a:design2

a:design2 is state-of-the-art software for print image design by Allen Coding. It's simple and intuitive interface allows quick and highly professional design of print images.



Even complex print images can be designed and transferred to the printer with ease. Multiple printers can be set up in a network environment very quickly due to the well structured configuration tools implemented in a:design2.

### a:design2

### Codesoft



With its new and progressive design for simple application, the label generation software CODESOFT offers unprecedented flexibility, performance and global support. It is a good choice for professional applications in industrial environments.



**ALLEN CODING**  
A DIVISION OF ITW

#### Deutschland

Allen Coding GmbH  
Friedrich-Bergius-Ring 30  
D-97076 Würzburg  
Tel.: +49 (0) 931 25076-0

#### United Kingdom

ITW  
Unit 9, Gateway 1000,  
Whittle Way, Arlington, Business Park,  
Stevenage, Hertfordshire SG1 2FP  
Tel.: +44 (0) 1438 347 770

[www.AllenCoding.com](http://www.AllenCoding.com)

