

Inkjet Printer
UX Series

HITACHI
Inspire the Next



Coding Solutions by Hitachi



Hitachi UX-Series

For over 40 years, Hitachi has developed and produced high-performance ink jet printers based on the well-proven Continuous InkJet (CIJ) principle for industrial marking.

Hitachi Industrial IJ printers are high-speed printers adopting a non-contact printing method, ideal for a wide range of applications. They are capable of applying best before dates, logos, barcodes, lot numbers and data matrix codes, which makes the new UX-Series the perfect solution for both complex and standard applications.

The UX-Series is a global model with highly evolved “Reliability”, “Efficiency”, “Ease of Use” and even “Eco-friendly” performance.

High reliability

Hitachi Products are renowned for being extremely reliable in harsh environments. All functionally critical parts are manufactured in-house. The use of Hitachi’s own components reinforces the high quality levels, reliability and excellent value for money.

Cost-effective

The new economical ink recovery technique achieves industry-leading levels of make-up consumption and the very low maintenance costs minimise the total cost of ownership.



Intuitive Print Control

Worry-Free Integration

Simple Fluid Management

Reliable Circulation System

New Versatile, Durable Print Head



Global sales & service network

Are you looking for a proven global company that can work with you at a local level? Hitachi offers a global sales and service network when marking, coding and traceability challenges demand a coordinated answer. For each of your locations, and across your entire organization we will champion your goals by providing international consistency, global perspective, broad expertise and coordinated service with dedicated contacts. Our global team applies its worldwide technical expertise to

your unique challenges in a consistent way. Tangible deliverables and proven solutions are results of our business analysis and project implementation. Mechanical integration supported by 3D CAD design, electrical schematics, customized circuits, application specifications and customized documents. In addition, cross-border project management and coordination between suppliers, OEM's and end-users are part of our deliveries. You gain more visibility and save time and money.

Simplicity



Mess-free, Mistake-proof Fluid Refills

Intelligent fluid cartridges reduce the possibility of hazardous fluid spills during refill. Shaped differently, the Ink and Make-up cartridges are easily identifiable as well as sized to fit in each respective receptacle.



RFID Recognition

Error reduction is key to increased uptime and that's why the UX Series now features RFID* Recognition for ink and make-up replacement. A quick scan of each bottle allows the system to identify the fluid in question and instruct the operator based on compatibility.

* Some geographic areas are excluded.
Hitachi Industrial Equipment Systems Co. Ltd, declares that the IC tag reader is in compliance with the essential requirements and other relevant provisions of the FDD Part 15 subpart C, EN 301 489 1/3, EN 300 330-1/2

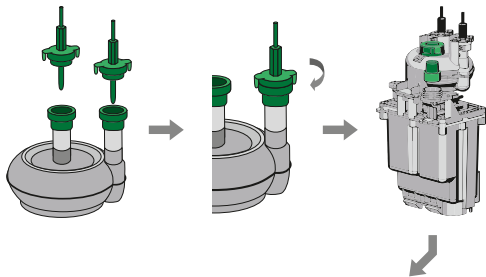




Tool-less Filter Replacement

Ink filters can be replaced without the use of tools or a technician, resulting in virtually zero downtime for easy maintenance. No more mandatory, time-based failure due to machine operation.

(Original Hitachi patent: EP 226 1037 A1 / EP 230 5470 A1)



IC Card with RFID function

With the new Hitachi IC Card any login information and print data can be managed fast, easy, and safely.

User Login

By scanning the IC Card, only the registered user can login quickly without entering a password. Each user operation can be limited to prevent human error.

Print data selection

By scanning the IC Card the print data can be quickly called up. Prevent calling up incorrect data which may happen with manual operation.





Intuitive Machine Interface



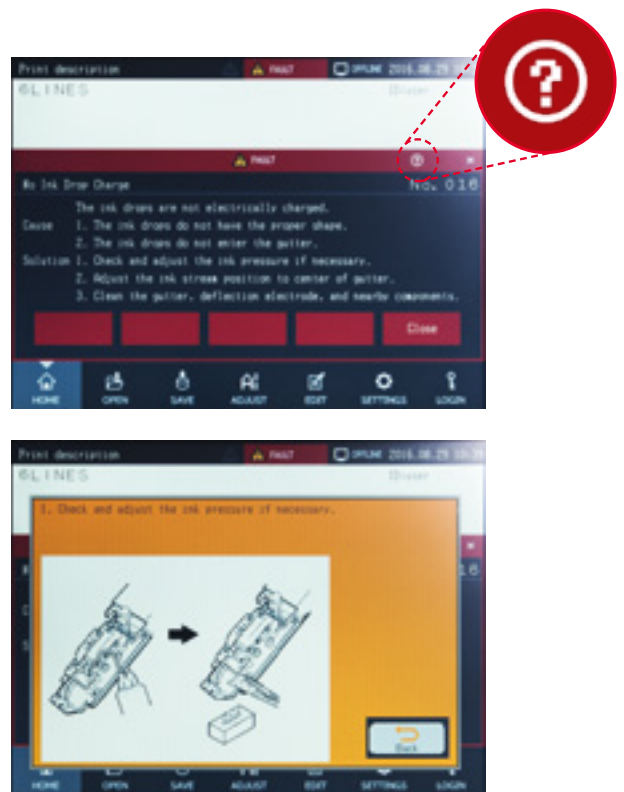
Intuitive User Interface

A 10.4-inch TFT LCD touch-panel screen provides a wide, easy-to-see viewing angle and intuitive operation. In addition, when changing print messages, a preview function allows the operator to verify on-screen what message will be changed to help avoid erroneous printing.



On-Screen Guidance

The UX Series features an integrated, easy to access troubleshooting guide, helping operators easily find answers to common issues and reducing downtime due to simple problems.



T.R. CALCATA GOLD

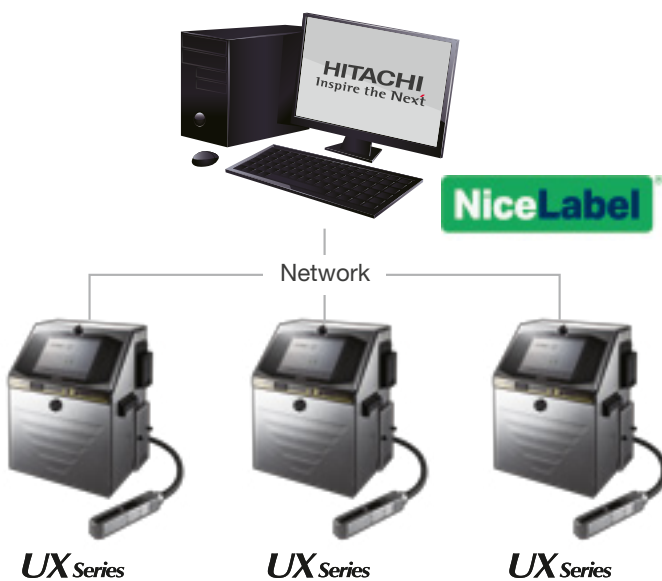
SILVER



Convenient Remote Management

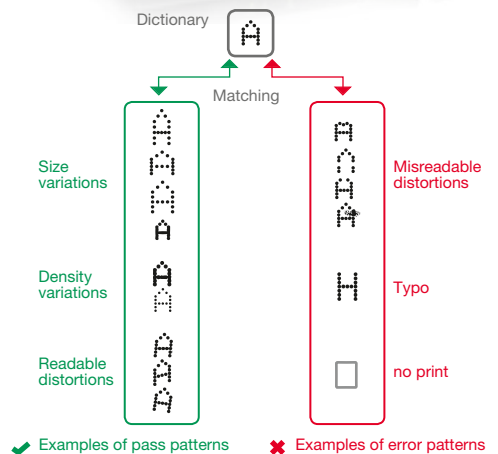
Ethernet is a standard feature on UX machines*. In addition, open network is supported, allowing easier system integration. Collective management via a host system enables two or more devices to be easily networked.

*UX-B excluded



Print Error Recognition

The Hitachi Vision System has been optimised to work with Ink Jet typical dot matrix characters. It verifies the content of each printed message instantaneously while allowing for typical CIJ character variations, assuring an optimal level of print quality.





Versatile, Durable Print Head



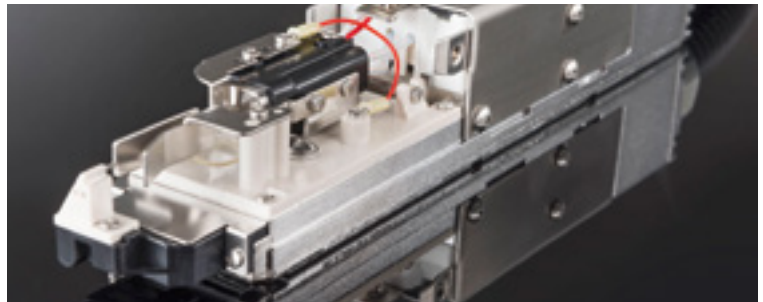
Versatile Tapered Print Head

Proximity to product can be challenging using traditional print heads, but the UX's new Tapered print head technology allows for even closer printing, resulting in improved print quality.



Durable Ni-Cr Plating

The UX-Series print head features a new Nickel-Chrome finish, giving it exceptional corrosion resistance and increasing the print head's lifespan in demanding environments like those requiring wash-down or exposure to caustic chemicals.



Up to 6-Line Print

A single UX print head can print up to six lines by employing an innovative print control system. High-speed single line printing of excellent quality is also possible. Hitachi's original interlaced-print-control-system makes each print character appear extremely clear regardless of print height.





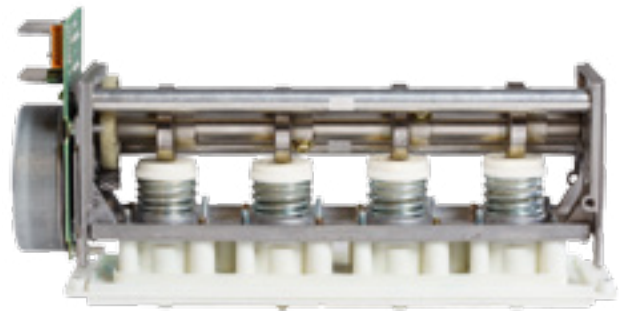
Reliability



Pump Unit (Valves and Camshaft)

At the heart of the UX Series inkjet printer is a diaphragm based circulation system. Unique to Hitachi, the UX's diaphragm system dramatically improves reliability, leading to a reduction in total cost of ownership.

A dedicated viscometer gives a true measure of the ink's viscosity further increasing reliability and uptime.



Reduced Make-up Consumption and Running Cost

Motor Speed Control Function suppresses make-up evaporation and offers industry-leading level of make-up consumption.

The premium model UX-E achieves a consumption of only 2.5 ml/h thanks to Hitachi's latest patented Fluid Consumption Reduction System.

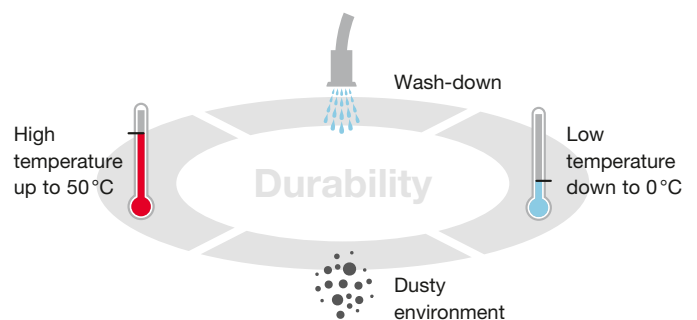
2.5 ml/h*

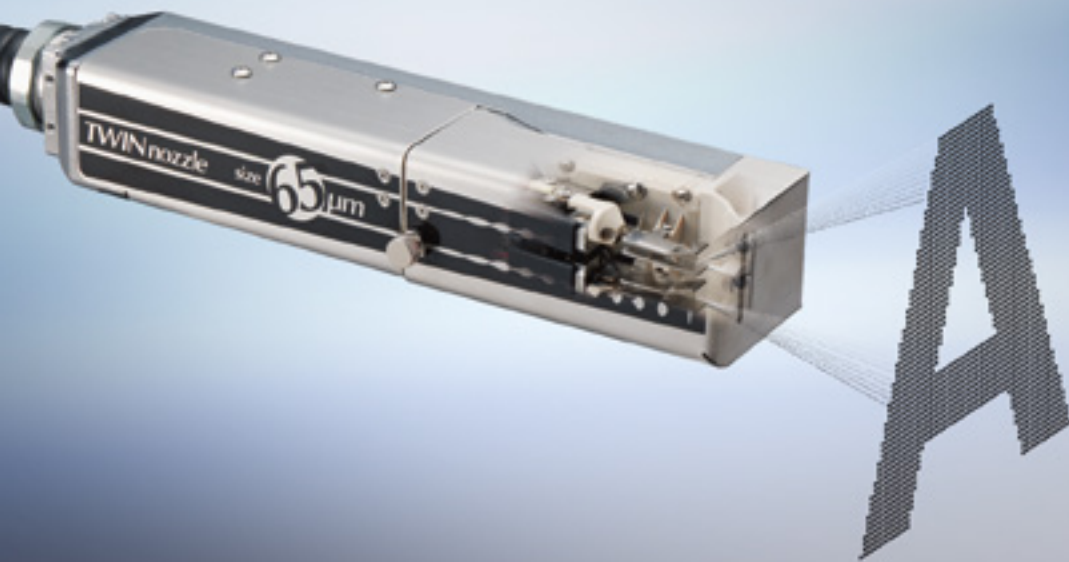
*Hitachi Ink 1067k at 20°C



Designed for harsh environments

The stainless steel cabinet offers IP65 and allows a wash-down with pressured water and industrial detergent, to meet any environment and hygiene requests. The UX Series with IP65 protection is the ideal choice for applications in the meat and dairy industries.



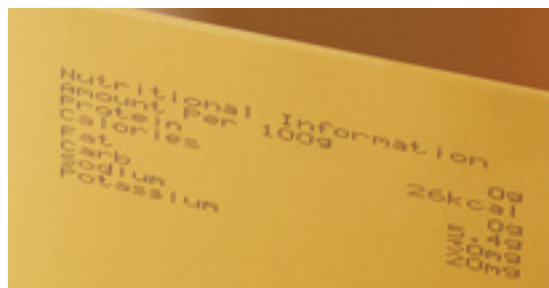


Twin Nozzle Model*



Flexible 8 Line Print

A single printhead can now print up to eight lines of text by employing an innovative twin nozzle. Hitachi's interlaced print control system clearly prints characters one by one and also enables multiple-line high-speed printing, which provides excellent quality.



High-speed printing

Two nozzles at one head realizes double-speed printing, which can track even on a high-speed production line, resulting in high-quality printing regardless of the number of print lines*.

*Compared to a single nozzle machine in case of 2-line printing, depends on the print content.



Versatile 64-Dot

The innovative twin nozzle can now print up to 64 dots of text. The UX-Series with twin nozzle is ideally suited to marking on secondary packaging. Using 64-dots logos and text can be edited to allow a variety of printing designs.

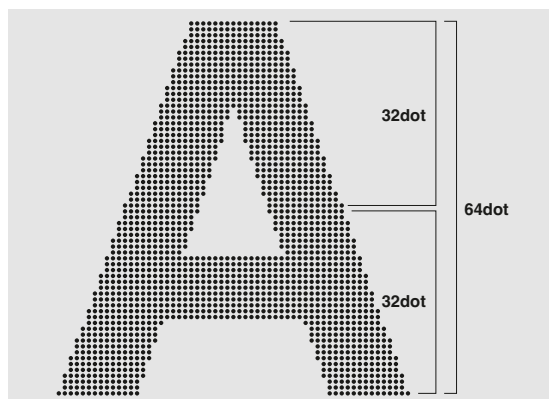


Image is for illustration purposes

*available 2017/02



UX-P For Pigmented Inks



UX-P for pigmented inks

The UX Printer is designed for high contrast marking on dark surfaces with pigmented inks at highest quality. Typical application areas include automotive parts, cables, plastic piping and electronic components.

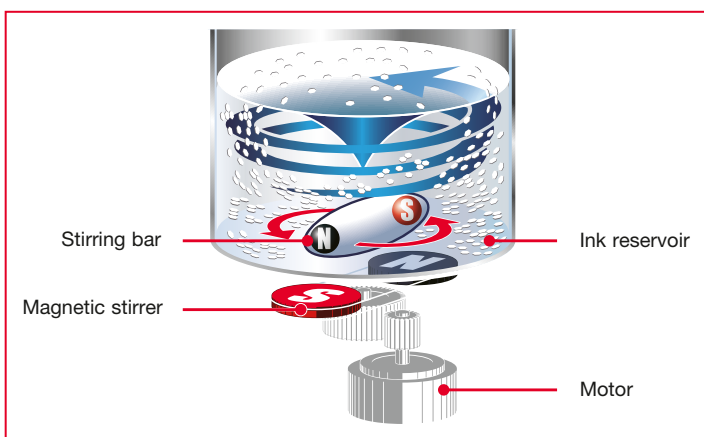


Pigmented ink stirring system

The electric stirrer system prevents the agglomeration and the setting of pigments.

In addition, the Pigment model is equipped with an "Ink circulation control" function, which allows the ink to circulate even in a standby mode to avoid the ink fixing and ensures a smooth operation during production.

Smooth supply for ink and make-up fluid
Ink and make-up fluid can be supplied at any time with no interruption



Electric stirrer



HITACHI

Inspire the Next

Please follow us:



More information about
Hitachi Coding & Marking products:
www.hitachi-industrial.eu

Hitachi Europe GmbH, Am Seestern 18, D-40547 Düsseldorf
Phone: +49(0)211-5283-0, Fax: +49(0)211-5283-649
www.hitachi-industrial.eu, info@hitachi-ds.com
© Hitachi Industrial Equipment Systems Co., Ltd., Japan

All company and product names in this brochure are
the property of the respective companies.